

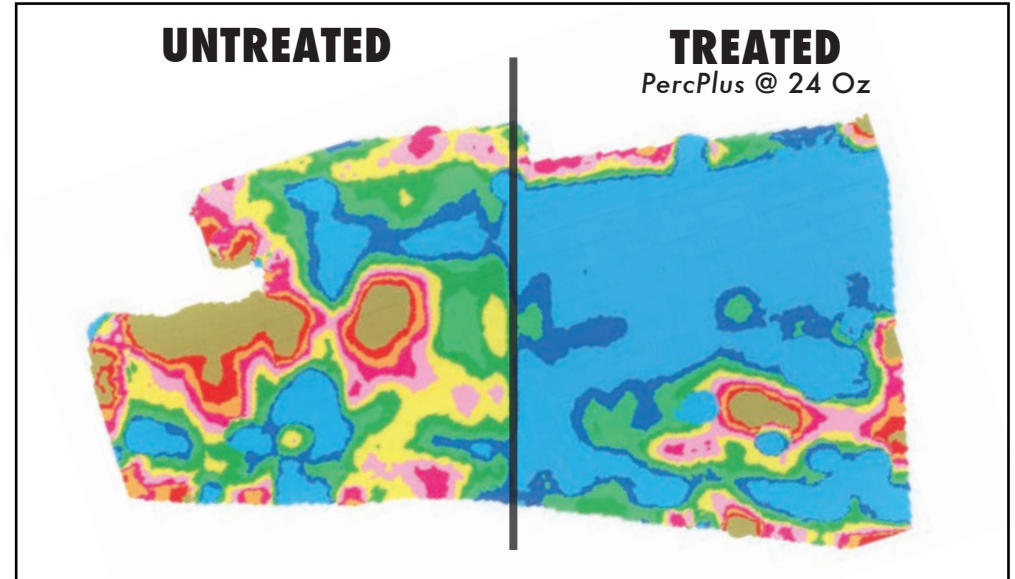
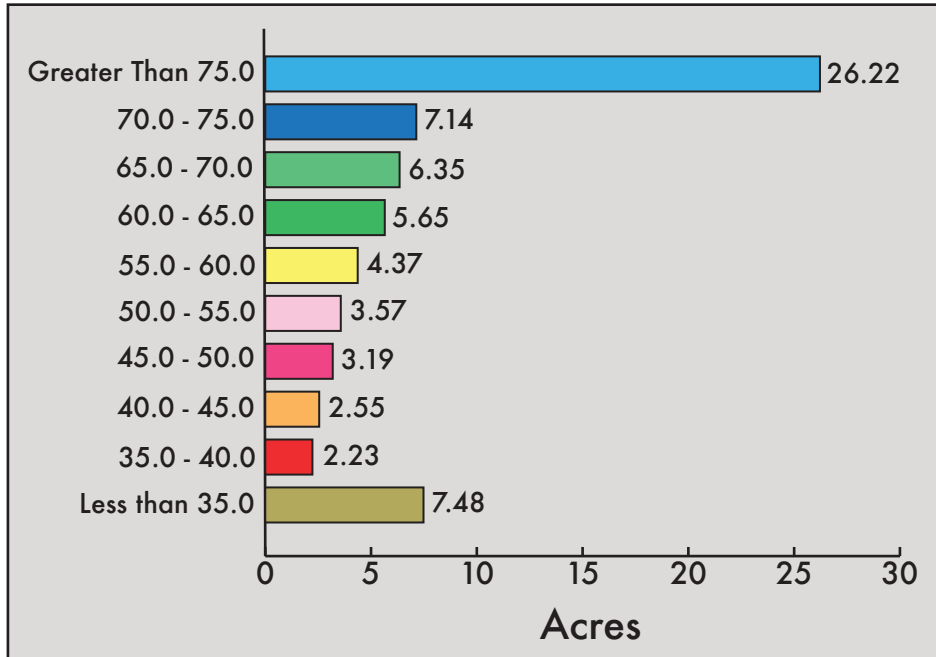


PercPlus

LATE SEASON APPLICATION

2009 SOYBEAN FARM TRIAL

NIPPER FARMS, ISSAQUENA COUNTY, MS
JEFF AND WILL NIPPER



Treated with: 24 Oz of PercPlus
Crop Stage: Soybeans - R4
Area: 68.74 acres
Average Yield: 66.3 bushels/acre
Total Yield: 4,556.9 bushels

Results:

	Untreated	Treated
Low Yield	47.06 bu/ac 2001.48 bu	97.5 bu/ac 2555.42 bu
Average Yield	51.95 bu/ac 2209.55 bu	89.56 bu/ac 2347.35 bu
High Yield	57.16 bu/ac 2431.05 bu	81.11 bu/ac 2125.85 bu